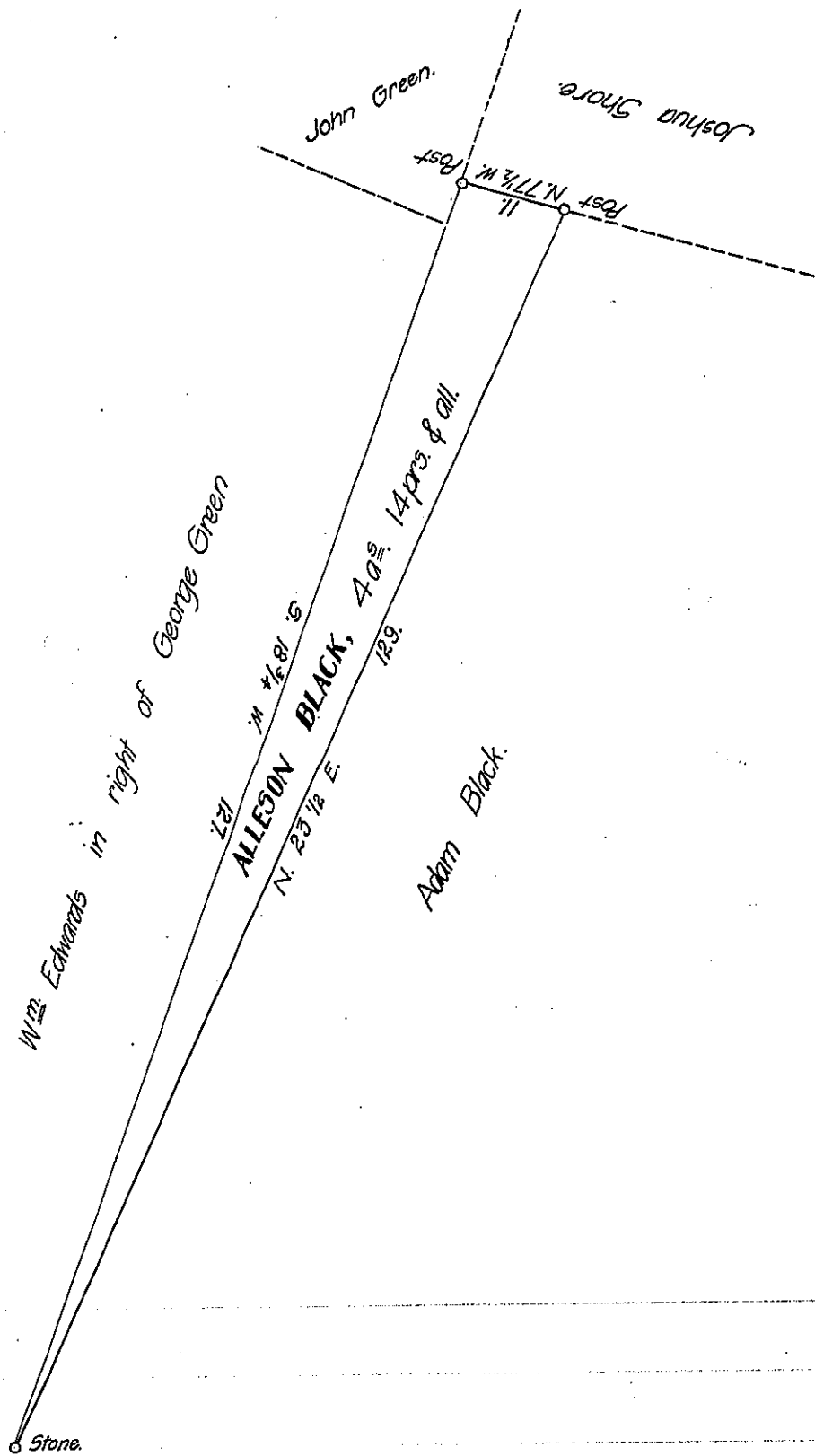


FORM No 1.



Situate in Clay township, Huntingdon county, containing four Acres fourteen prs. and allowance of Six pr. centum. Surveyed June the 30th A.D. 1857. In pursuance of a warrant granted to Alleson Black (for fifty Acres) dated June 15th A.D. 1857.

J. F. Ramey,

County Surveyor.

To John Rowe Esq }
 Surveyor General. }

IN TESTIMONY that the above is a copy of the original remaining on file in the Department of Internal Affairs of Pennsylvania, made conformably to an Act of Assembly approved the 16th day of February, 1833, I have hereunto set my Hand and caused the Seal of said Department to be affixed at Harrisburg, this Twenty-fifth day of October, 1907.

Henry Howard
 Secretary of Internal Affairs.